



Greenwich House Pottery

GHP West Village | 16 Jones Street, New York, NY 10014 | (212) 242-4106
GHP Chelsea | 80 Eighth Avenue, Suite 601, New York, NY 10011 | (646) 347-1699
Barrow Street | 27 Barrow Street, 5th Floor, New York, NY 10014
www.greenwichhousepottery.org

Updated June 26

Summer 2026

West Village: July 6 – August 15

Chelsea: July 6 – August 29

Financial aid is available for August classes.
Apply by July 12.

Registration begins Monday, June 8
10:00 a.m.: Registration opens for all current GHP students
12:00 p.m.: Registration opens for new students

Complete details inside!



Class information
and registration:



Information and Registration Policies

SUMMER TERM 2026

West Village: July 6 – August 15

Chelsea: July 6 – August 29

STUDIO LOCATIONS

GHP West Village | 16 Jones Street, New York, NY 10014

GHP Chelsea | 80 Eighth Avenue, New York, NY 10011

Barrow Street | 27 Barrow Street, New York, NY 10014

ABOUT GREENWICH HOUSE POTTERY

Greenwich House Pottery offers ceramics programs for every level of practice and discipline, including wheel throwing, handbuilding, mold making, slipcasting, and special topics. In our multi-week classes, you can get started with the fundamentals of working in clay in an intro or beginner class, build on existing skills in a mixed-level class, or refine your style with more ambitious projects in an intermediate/advanced class! Launched in 2025, our Artist Membership program is a monthly rental space for independent artists.

The Pottery operates three well-equipped studios to support your work. Between our three Manhattan locations, we manage three handbuilding studios, three wheel-throwing studios, a mold making and slipcasting studio, two mixed-use studios, 40+ potter's wheels, three gas kilns, eight electric kilns (barrel and front-loading), four slab rollers, two extruders, one Soldner clay mixer, five de-airing pug mills, and a spray booth. The spray booth and gas firings are only available at the West Village studio, and our mold making and slipcasting facility is currently at 27 Barrow Street.

GHP West Village offers six clay bodies for students (porcelain casting slip, white stoneware, throwing stoneware, sculpture stoneware, red earthenware, and 25-pound bags of high-fire porcelain) and offers low-, mid-, and high-temperature firings. GHP Chelsea offers two clay bodies for students (dark and light stoneware) and fires glazes to cone 6 only. Both studios have a large selection of glazes, slips, and washes. Other educational resources include the Jane Hartsook Gallery, access to artists-in-residence, visiting artist lectures, and a lending library with books dedicated to ceramics.

REGISTRATION

Registration begins Monday, June 8.

10:00 a.m.: Classes are available for all current GHP students.

12:00 p.m.: Classes are available to new students.

Registration is available online. "Current student" registration is available to any student who has participated in a multi-week class within the last year. Adult classes are for individuals age 18 years old and older. Students must be registered for a multi-week class at the GHP location at which they intend to work and fire pieces. Those who wish to work at both studios must register for a class at both locations. Students may not bring pieces between studios.

FINANCIAL AID

Greenwich House Pottery is committed to making ceramics classes accessible to all prospective students, and offers need-based financial aid on a term-to-term basis, as funds are available. Applications must be submitted each term. For priority consideration for summer term financial aid, apply before Sunday, May 31. Applications received between June 1 and July 12 will be considered for a second round of awards for 4-week classes that begin the week of August 3. Find details and the application form on our website.

PAYMENTS

Payment is due at time of registration and payment plans are available. Greenwich House accepts cash, checks, ApplePay, and credit cards. There is a returned check fee of \$50.

FIRING POLICY

All students are responsible for paying for firing their work. Firing charges are \$0.06 per cubic inch for both bisque and glaze firings. There is a \$1 minimum charge on all pieces. Students may only fire work at the location where they are currently enrolled.

STUDIO SESSIONS

In addition to class meetings, currently enrolled students can book four-hour studio sessions for \$10 per reservation (\$5 on Friday evenings).

Registration Eligibility

Students may only book studio sessions at the GHP location where they are enrolled in a multi-week class. The Pottery will not honor registrations for individuals who are not enrolled in a class. Please register in advance to ensure availability.

Studio Session Schedule

Studio sessions are available in classrooms when other classes are not scheduled, typically weekday afternoons, weekends, and in the dedicated studio session room at GHP Chelsea. See the full schedule for studio session availability. Booking and cancellation policies are on our website.

GLAZING

Use of the glaze room is free for registered students during business hours. Students should visit the "Current Students" section of our website to determine glaze room availability based on faculty glazing demonstration dates. Students may be asked to limit their glazing time during high-traffic weeks of the term. Those wishing to reserve the spray booth at GHP West Village must make an online reservation.

REFUNDS AND TRANSFERS

In-Person Classes and Workshops

All requests for refunds must be made in writing. All refunds are subject to a \$50 administration fee. For a 100% refund (less the \$50 fee), requests must be received one week prior to the first session. For classes 4-weeks and longer, written requests received less than a week and at least one day prior to the first session will receive a 50% refund minus the fee. For workshops, requests made less than a week in advance of the workshop will receive a 50% refund. Cancellations received less than 24 hours before the first class or workshop meeting will not be refunded.

Inadequate Enrollment

If a class must be canceled due to inadequate enrollment, registered students will be notified as soon as possible and given the opportunity to transfer to another class. If an alternative class is not chosen, a refund for the total cost of tuition will be issued.

Transfers

Students enrolled in classes are permitted to transfer to another class at GHP within the same term, up to the second week of class, subject to instructor approval and provided there is an available seat. Transfers to alternate terms are subject to refund and registration policies. Students are permitted to transfer between GHP West Village and GHP Chelsea studios prior to either term starting, provided that there is space. Transfer requests for workshops must be made at least one week in advance.

Late Registration

To ensure our instructors can communicate introductory information to all class participants, students should register at least one day prior to the first class meeting. Late registration for online courses will be permitted up to the second week of class. Registration after the second week of class may be permitted at the discretion of the instructor.

Make-Up Classes

The Pottery is not responsible for issuing reimbursements or providing make-up classes for those missed due to illnesses, substitute teachers, or other events beyond our control. Alternate make-up classes are not permitted. We do not prorate or offer studio time for missed classes.

WEATHER EMERGENCIES

During weather emergencies, GHP closes in accordance with the NYC public school system, as broadcast on the radio, 311, and the local TV news. Emergency closures are announced via email, social media, and can be retrieved by calling GHP West Village at 212-242-4106 ext. 5, or GHP Chelsea at 646-347-1699 ext. 3. At the Pottery's discretion, classes that have been canceled due to weather emergencies will be rescheduled or a refund will be issued as firing credit.

Register online at www.greenwichhousepottery.org

Handbuilding Classes

Beginning Handbuilding

Our beginning handbuilding classes cover basic techniques such as wedging, coiling, slab-making, pinching, and glazing fundamentals.

Mondays, 6:45 – 9:45 p.m.

Keira Phillips | GHP West Village
H5 \$470 6 weeks (July 6 – Aug 10)

Tuesdays, 10:00 a.m. – 1:00 p.m.

Ye'ela Wilschanski | GHP Chelsea
CH2 \$625 8 weeks (July 7 – Aug 25)

Tuesdays, 2:30 – 5:30 p.m.

Julia Elsas | GHP Chelsea
CH4A \$310 4 weeks (July 7 – 28)
CH4B \$310 4 weeks (Aug 4 – 25)

Tuesdays, 6:45 – 9:45 p.m.

Michelle Im | GHP Chelsea
CH5A \$310 4 weeks (July 7 – 28)
CH5B \$310 4 weeks (Aug 4 – 25)

Wednesdays, 10:00 a.m. – 1:00 p.m.

Suzu Goodelman | GHP West Village
H2 \$470 6 weeks (July 8 – Aug 12)

Wednesdays, 10:00 a.m. – 1:00 p.m.

Brett Murphy | GHP Chelsea
CH3A \$310 4 weeks (July 8 – 29)
CH3B \$310 4 weeks (Aug 5 – 26)

Wednesdays, 6:45 – 9:45 p.m.

Lu Zhang | GHP Chelsea
CH6A \$310 4 weeks (July 8 – 29)
CH6B \$310 4 weeks (Aug 5 – 26)

Wednesdays, 6:45 – 9:45 p.m.

True Arizola-Lyons | GHP West Village
H7 \$470 6 weeks (July 8 – Aug 12)

Thursdays, 10:00 a.m. – 1:00 p.m.

Michelle Im | GHP West Village
H3 \$470 6 weeks (July 9 – Aug 13)

Fridays, 10:00 a.m. – 1:00 p.m.

Gina Tibbott | GHP West Village
H4 \$470 6 weeks (July 10 – Aug 14)

Mixed-Level Handbuilding

Mixed-level classes are tailored for students who know the basics, but could use more time to refine their technique. Students are required to have completed at least 24 weeks of handbuilding classes.

Mondays, 10:00 a.m. – 1:00 p.m.

Ye'ela Wilschanski | GHP West Village
H13 \$470 6 weeks (July 6 – Aug 10)

Thursdays, 10:00 a.m. – 1:00 p.m.

Julia Elsas | GHP Chelsea
CH8 \$625 8 weeks (July 9 – Aug 27)

Thursdays, 2:30 – 5:30 p.m.

Eva Conrad | GHP Chelsea
CH9A \$310 4 weeks (July 9 – 30)
CH9B \$310 4 weeks (Aug 6 – 27)

Intermediate/Advanced Handbuilding

Intermediate/advanced courses delve into more complex techniques and surface treatments. Students are expected to have completed at least one year of handbuilding coursework prior to registering.

Mondays, 6:45 – 9:45 p.m.

Michelle Im | GHP West Village
H14 \$470 6 weeks (July 6 – Aug 10)

Mondays, 6:45 – 9:45 p.m.

Brett Murphy | GHP Chelsea
CH11 \$625 8 weeks (July 6 – Aug 24)

Tuesdays, 10:00 a.m. – 1:00 p.m.

Anjali Wright | GHP West Village
H9 \$470 6 weeks (July 7 – Aug 11)

Tuesdays, 10:00 a.m. – 1:00 p.m.

Eva Conrad | GHP West Village
H1 \$470 6 weeks (July 7 – Aug 11)

Wednesdays, 6:45 – 9:45 p.m.

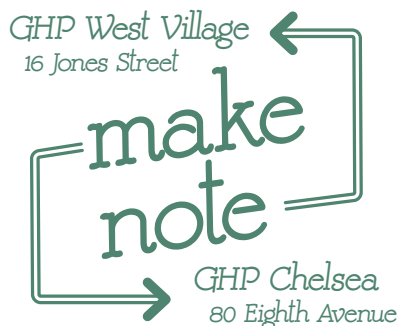
Brett Murphy | GHP West Village
H15 \$470 6 weeks (July 8 – Aug 12)

Thursdays, 10:00 a.m. – 1:00 p.m.

Kate Missett | GHP Chelsea
H11 \$470 6 weeks (July 9 – Aug 13)

Fridays, 10:00 a.m. – 1:00 p.m.

Cammi Climaco | GHP West Village
H12 \$470 6 weeks (July 10 – Aug 14)



Last Day for Wet Clay

West Village: Sunday, August 9
Chelsea: Sunday, August 23

introductory

Wondering where to start?

While all of our beginner-level classes are great for first-time artists, classes marked with this flag are specifically geared toward folks with less than 6 months' experience with clay.



Wheel Throwing Classes

Beginning Wheel Throwing

No experience required! This class covers the basics of creating ceramic forms on the wheel and glazing fundamentals.

Mondays, 6:45 – 9:45 p.m.
Robin Gammons | GHP West Village
W5 \$470 6 weeks (July 6 – Aug 10)

Tuesdays, 10:00 a.m. – 1:00 p.m.
Luc Hammond-Thomas | GHP West Village
W1 \$470 6 weeks (July 7 – Aug 11)

Tuesdays, 10:00 a.m. – 1:00 p.m.
Chang Chih-Hsiang | GHP Chelsea
CW2 \$625 8 weeks (July 7 – Aug 25)

Tuesdays, 6:45 – 9:45 p.m.
Emily Woo | GHP Chelsea
CW6 \$625 8 weeks (July 7 – Aug 25)

Tuesdays, 6:45 – 9:45 p.m.
Liam Maillaro | GHP West Village
W6 \$470 6 weeks (July 7 – Aug 11)

Wednesdays, 10:00 a.m. – 1:00 p.m.
Min Kyung Choi | GHP West Village
W2 \$470 6 weeks (July 8 – Aug 12)

Wednesdays, 10:00 a.m. – 1:00 p.m.
Ye'ela Wilschanski | GHP Chelsea
CW3A \$310 4 weeks (July 8 – 29)
CW3B \$310 4 weeks (Aug 5 – 26)

Wednesdays, 6:45 – 9:45 p.m.
Jerry Lue | GHP Chelsea
CW7A \$310 4 weeks (July 8 – 29)
CW7B \$310 4 weeks (Aug 5 – 26)

Wednesdays, 6:45 – 9:45 p.m.
Michael Guerra Foerster | GHP West Village
W7 \$470 6 weeks (July 8 – Aug 12)

Thursdays, 10:00 a.m. – 1:00 p.m.
Jordan Klem | GHP West Village
W3 \$470 6 weeks (July 9 – Aug 13)

Thursdays, 6:45 – 9:45 p.m.
Nick Park | GHP West Village
W8 \$470 6 weeks (July 9 – Aug 13)

Fridays, 10:00 a.m. – 1:00 p.m.
Chang Chih-Hsiang | GHP West Village
W4 \$470 6 weeks (July 10 – Aug 14)

Fridays, 10:00 a.m. – 1:00 p.m.
Jordan Klem | GHP Chelsea
CW1A \$310 4 weeks (July 10 – 31)
CW1B \$310 4 weeks (Aug 7 – 28)

Fridays, 6:45 – 9:45 p.m.
Nick Park | GHP Chelsea
CW8B \$310 4 weeks (Aug 7 – 28)



Mixed-Level Wheel Throwing

Mixed-level classes are tailored for students who know the basics, but could use more time to refine their technique. Students are required to have completed at least 24 weeks of wheel throwing classes.

Mondays, 10:00 a.m. – 1:00 p.m.
Dustin Yager | GHP West Village
W9 \$470 6 weeks (July 6 – Aug 10)

Tuesdays, 2:30 – 5:30 p.m.
Abby Regner | GHP Chelsea
CW9 \$470 6 weeks (July 7 – Aug 11)

Thursdays, 6:45 – 9:45 p.m.
Ryan Rennie | GHP Chelsea
CW10 \$625 8 weeks (July 9 – Aug 27)



Intermediate/Advanced Wheel Throwing

Intermediate/advanced wheel courses build upon the foundations of wheel throwing by introducing more complex techniques. Students must have at least one full year of hands-on wheel experience in order to enroll, and must be able to confidently center, throw a 7" cylinder, and glaze.

Mondays, 6:45 – 9:45 p.m.
Julie Knight | GHP Chelsea
CW12 \$625 8 weeks (July 6 – Aug 24)

Mondays, 6:45 – 9:45 p.m.
Josephine Heilpern | GHP West Village
W15 \$470 6 weeks (July 6 – Aug 10)

Tuesdays, 10:00 a.m. – 1:00 p.m.
Dave Gibson | GHP West Village
W10 \$470 6 weeks (July 7 – Aug 11)

Tuesdays, 6:45 – 9:45 p.m.
Michelle Currier | GHP West Village
W16 \$470 6 weeks (July 7 – Aug 11)

Wednesdays, 10:00 a.m. – 1:00 p.m.
Luc Hammond-Thomas | GHP West Village
W11 \$470 6 weeks (July 8 – Aug 12)

Wednesdays, 6:45 – 9:45 p.m.
Sabri Ben-Achour | GHP West Village
W17 \$470 6 weeks (July 8 – Aug 12)

Thursdays, 10:00 a.m. – 1:00 p.m.
Josephine Heilpern | GHP Chelsea
CW11 \$625 8 weeks (July 9 – Aug 27)

Thursdays, 10:00 a.m. – 1:00 p.m.
Julie Knight | GHP West Village
W12 \$470 6 weeks (July 9 – Aug 13)

Thursdays, 6:45 – 9:45 p.m.
David Gibson | GHP West Village
W18 \$470 6 weeks (July 9 – Aug 13)

Last Day for Wet Clay

West Village: Sunday, August 9
Chelsea: Sunday, August 23

introductory

Wondering where to start?

While all of our beginner-level classes are great for first-time artists, classes marked with this flag are specifically geared toward folks with less than 6 months' experience with clay.

Mold Making and Slipcasting Classes

In the slipcasting studio, students create plaster molds from found objects or original designs and use liquid porcelain slip to produce ceramic forms in multiples. From functional ware to sculpture, this process introduces a new way of thinking about clay, blending precision, repetition, and experimentation at the intersection of industrial ceramics and artistic practice.

Tuition includes 6 weeks of class (4 hours each), as well as plaster and porcelain slip. Each class also includes 2 weeks of additional studio access for independent casting, ending August 29.

Beginning Mold Making and Slipcasting

Learn how to make plaster molds and cast multiple forms using porcelain slip. Get to know the qualities of plaster as you make 1-, 2-, and 3-part molds. Students will cover the basics of glazing and experiment with combining casts.

Tuesdays, 6:00 – 10:00 p.m.

Aimee Ehrman | 27 Barrow Street
S2 \$675 6 weeks (July 7 – Aug 11)

Thursdays, 10:00 a.m. – 2:00 p.m.

Aimee Ehrman | 27 Barrow Street
S1 \$675 6 weeks (July 9 – Aug 13)

Intermediate/Advanced Mold Making and Slipcasting

Learn more complex applications and techniques for slipcasting. Intermediate/advanced students should be able to confidently make multi-part plaster molds, and should have hands-on experience working with porcelain slip.

Tuesdays, 10:00 a.m. – 2:00 p.m.

Victoria Shaheen | 27 Barrow Street
S3 \$675 6 weeks (July 7 – Aug 11)



GHP Artist Membership Program

Independent studio access for handbuilding, wheel throwing, and slipcasting.



Learn More About
Membership



Special Topics Classes



Gina Tibbott

Surface Techniques

Discover ways to heat up your surface strategies in this summer class that will cover techniques such as:

- additive textures
- carving and sgraffito
- slips and underglazes
- stamps
- press molds
- joining multiple pieces
- glaze techniques
- post-firing surfaces and repairs

This class will meet in a handbuilding studio, but it is open to makers of all types. Some experience with clay is helpful but all levels are welcome.

Wednesdays, 2:30 – 5:30 p.m.

Gina Tibbott | GHP Chelsea

CS1 \$625 8 weeks (July 8 – Aug 26)



Kate Missett

Colored Clay and Majolica

Explore two techniques for creating unique colorful ceramic surfaces. Using colored porcelain we will form inlaid patterns into a decorative surface that goes through the clay. These will be used to form simple vessels and jewelry. We will also learn to apply mason stain washes on top of majolica glaze to render detailed imagery that does not move in the firing process. Students should bring a few terra cotta bisqued pieces to class. Some experience with clay is helpful, but all levels are welcome.

Tuesdays, 6:45 – 9:45 p.m.

Kate Missett | GHP West Village

ST1 \$470 6 weeks (July 7 – Aug 11)

Professional Development

Professional Practices for Artists

Explore the practical tools artists use to build sustainable creative lives in this 6-part lecture and discussion series. Sessions are designed to function as standalone workshops or as part of the full series.

See detailed descriptions online.

- July 7: Foundations of a Professional Practice
- July 14: Applications, Outreach, and Communication
- July 21: Photographing, Presenting, and Managing Your Work
- July 28: Websites, Social Media, and Digital Presence
- Aug 4: Pricing, Budgeting, and Sustainable Practice
- Aug 11: Shipping, Studio Systems, and Future Planning

Tuesdays, 6:30 – 8:30 p.m.

Caitlin Brown | 16 Jones Street

ST2 \$25/week July 7 – Aug 11



ON THE COVER

Christy G. at GHP West Village

I started ceramics at GHP about four years ago. Throughout these years I have grown to love Pottery and the programs at Greenwich House so much.

Everyone is so kind, patient and inspirational. I have made some wonderful pieces and even more amazing friendships. Greenwich House Pottery has given me many wonderful gifts. It is my place of peace and creativity and I'm so grateful for it.

Gallery & Residency

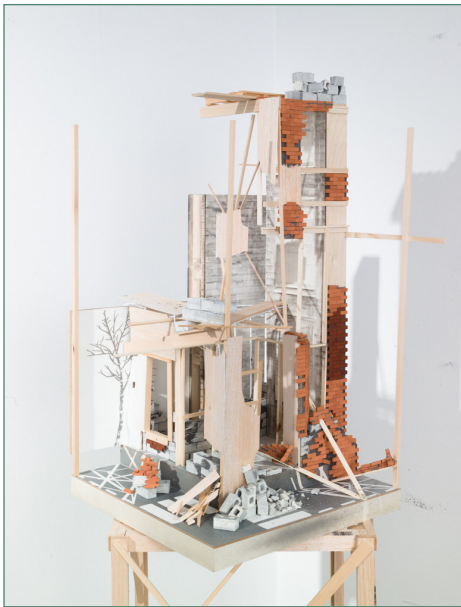
JANE HARTSOOK GALLERY

Ceramics Now

Lizzy Chemel, Amir Hariri, Melissa Joseph

Opening Reception | Thursday, July 23, 2026 | 5:00 – 7:00 p.m.

Exhibition on view July 23 – August 28, 2026



Amir Hariri, *Under Construction*, acrylic, cement, clay, graphite, plaster, wood, 2018, 16"x16"x30". Photo courtesy of the artist.



Photo: Jason Campbell

Michelle Im

Summer term resident artist

One-Time Classes

Clay is for sharing!

Get your hands in clay and create lasting memories with friends, family, and fellow makers. Register now for any of these engaging options.

Handmade Happy Hour (ages 18 and older)

Curious about playing with clay? Treat yourself or bring a friend! Let our talented faculty lead you through a variety of projects, including mugs, trays, vases, mementos, and even trying the pottery wheel. Pots will be fired and glazed by staff according to the participant's selection, then ready to pick up in approximately 3 weeks. BYOB for ages 21 and up.

Different projects every Saturday, 5:00 – 7:00 p.m.

GHP Chelsea
\$105 per person

Clay for Families (ages 6 and older)

Create cherished memories and enjoy the messy side of life in our studios. All tools and materials will be provided. Pots will be fired and glazed by staff according to the participant's selection, then ready to pick up in approximately 3 weeks. Children must be accompanied by an adult during this class.

Different projects every Saturday, 2:30 – 4:30 p.m.

GHP Chelsea

\$95 per person for the first two participants. Use the code "family-third" to register a third person (adult or child) for \$80. Please contact us to register groups of four or more.

Summer Teen Wheel (ages 13 – 18)

This two-week class offers teens a complete overview of the potter's wheel and glazing during 9 class sessions. Students meet with their instructor Monday – Friday during the first week, then Monday – Thursday to conclude the class. Students can arrive at 2:00 p.m., class meets from 2:30 – 4:30 p.m. and they may continue working until 6:00 p.m. All firing and materials are included and tools are provided. Open to all skill levels, no experience required.

Two weeks, Monday – Friday, then Monday – Thursday, 2:30 – 4:30 p.m.

Session 1 (TW1): July 6 – 16 | GHP West Village
Session 2 (TW2): July 20 – 30 | GHP West Village
Session 3 (TW3): August 3 – 13 | GHP West Village
Session 4 (TW4): August 17 – 27 | GHP Chelsea
\$750 per participant per session

Summer 2026

Greenwich House Pottery | Classes begin July 6

Clay Community in the West Village and Chelsea
www.greenwichhousepottery.org | See class description for dates and details.

West Village 16 Jones Street		Sunday	Monday	Tuesday	Wednesday	Thursday	Friday	Saturday	Chelsea 80 Eighth Avenue
Classes 10:00 a.m.–1:00 p.m. at both studios		Morning Classes							Classes 10:00 a.m. – 1:00 p.m. at both studios
West Village 2nd Floor Handbuilding	Closed	Studio Session	H9. Int. / Adv. Handbuilding Anjuli Wright	Studio Session	H11. Int. / Adv. Handbuilding Kate Missett	H12. Int. / Adv. Handbuilding Cammi Climaco	Studio Session	Chelsea Handbuilding Studio	
West Village 3rd Floor Handbuilding	Closed	H13. Mixed-Level Handbuilding Ye'ela Wilschanski	H1. Int. / Adv. Handbuilding Eva Conrad	H2. Beginning Handbuilding Suzy Goodelman	H3. Beginning Handbuilding Michelle Im	H4. Beginning Handbuilding Gina Tibbott	Studio Session		
	Closed	Partnership class Studio unavailable	CH2. Beginning Handbuilding Ye'ela Wilschanski	CH3A/B. Intro Handbuilding Brett Murphy	CH8. Mixed-Lvl Handbuilding Julia Elsas	Partnership class Studio unavailable	Studio Session	Chelsea Wheel Throwing Studio	
West Village 2nd Floor Wheel Throwing	Closed	W9. Mixed-Level Wheel Throwing Dustin Yager	W1. Beginning Wheel Throwing Luc Hammond-Thomas	W2. Beginning Wheel Throwing Min Kyung Choi	W3. Beginning Wheel Throwing Jordan Klem	W4. Beginning Wheel Throwing Chang Chih-Hsiang	Studio Session		
West Village 3rd Floor Wheel Throwing	Closed	Studio Session	W10. Int. / Adv. Wheel Throwing David Gibson	W11. Int. / Adv. Wheel Throwing Luc Hammond-Thomas	W12. Int. / Adv. Wheel Throwing Julie Knight	Studio Session	Studio Session	Chelsea Wheel Throwing Studio	
	Closed	Studio Session	CW2. Beginning Wheel Throwing Chang Chih-Hsiang	CW3A/B. Beginning Wheel Throwing Ye'ela Wilschanski	CW11. Int./Adv. Wheel Throwing Josephine Heilpern	CW1. 4-week Intro Wheel Throwing Jordan Klem	Studio Session		
27 Barrow Street Slipcasting classes meet 10:00 a.m.–2:00 p.m.	Closed	Studio Session	S3. Int. / Adv. Slipcasting Victoria Shaheen	Studio Session	S1. Beginning Slipcasting Aimee Ehrman	Studio Session	Studio Session		
Classes 2:30–5:30 p.m. at both studios		Afternoon Classes							Classes 2:30–5:30 p.m. at both studios
West Village 2nd Handbuilding	Closed	Studio Session	Studio Session	Studio Session	Studio Session	Studio Session	Studio Session	Chelsea Handbuilding Studio	
West Village 3rd Handbuilding	Closed	Studio Session	Studio Session	Studio Session	Studio Session	Studio Session	Studio Session		
	Closed	Partnership class Studio unavailable	CH4A/B. Beginning Handbuilding Julia Elsas	CS1. Surface Techniques Gina Tibbott	CH9A/B. Mixed-Lvl Handbuilding Eva Conrad	Studio Session	Studio Session	Chelsea Wheel Throwing Studio	
West Village 2nd Wheel Throwing	Closed	Studio Session	Studio Session	Studio Session	Studio Session	Studio Session	Studio Session		
West Village 3rd Wheel Throwing	Closed	Teen Wheel Studio unavailable	Teen Wheel Studio unavailable	Teen Wheel Studio unavailable	Teen Wheel Studio unavailable	Teen Wheel Studio unavailable	Studio Session	Chelsea Wheel Throwing Studio	
	Closed	Studio Session	CW9. 6-wk Mixed-Lvl Wheel Throwing Abby Regner	Studio Session	Studio Session	Studio Session	Studio Session		
27 Barrow St. Slip. 2:00–6:00 p.m.	Closed	Studio Session	Studio Session	Studio Session	Studio Session	Studio Session	Studio Session		
Classes 6:45–9:45 p.m. at both studios		Evening Classes							Classes 6:45 – 9:45 p.m. at both studios
West Village 2nd Floor Handbuilding	Closed	H5. Beginning Handbuilding Keira Phillips	ST1. Colored Clay and Majolica Kate Missett	H7. Beginning Handbuilding True Arizola-Lyons	Studio Session	Studio Session	Closed	Chelsea Handbuilding Studio	
West Village 3rd Floor Handbuilding	Closed	H14. Int. / Adv. Handbuilding Michelle Im	Studio Session	H15. Int. / Adv. Handbuilding Brett Murphy	Studio Session	Studio Session	Closed		
	Closed	CH11. Int. / Adv. Handbuilding Brett Murphy	CH5A/B. Beginning Handbuilding Michelle Im	CH6A/B. Beginning Handbuilding Lu Zhang	Studio Session	Studio Session	Closed	Chelsea Wheel Throwing Studio	
West Village 2nd Floor Wheel	Closed	W5. Beginning Wheel Throwing Robin Gammons	W6. Beginning Wheel Throwing Liam Maillaro	W7. Beginning Wheel Throwing Michael Guerra Foerster	W8. Beginning Wheel Throwing Nick Park	Studio Session	Closed		
West Village 3rd Floor Wheel	Closed	W15. Int. / Adv. Wheel Throwing Josephine Heilpern	W16. Int. / Adv. Wheel Throwing Michelle Currier	W17. Int. / Adv. Wheel Throwing Sabri Ben-Achour	W18. Int. / Adv. Wheel Throwing David Gibson	Studio Session	Closed	Chelsea Wheel Throwing Studio	
	Closed	CW12. Int. / Adv. Wheel Throwing Julie Knight	CW6 Beginning Wheel Throwing Emily Woo	CW7A/B. Beginning Wheel Throwing Jerry Lue	CW10. Mixed-Lvl Wheel Throwing Ryan Rennie	CW8B. Beginning Wheel Throwing Nick Park	Closed		
27 Barrow Street Slipcasting classes meet 6:00–10:00 p.m.	Closed	Studio Session	S2. Beginning Slipcasting Aimee Ehrman	Studio Session	Studio Session	Studio Session	Closed		